



2016 Annual Report



Ensuring Healthy Trout Populations through the
Protection, Reconnection and Restoration of
West Michigan's Cold Water Resources

2016 OVERVIEW

Your Schrems West Michigan Trout Unlimited team was very active in fiscal 2016. Highlights for 2016 include:

Conservation

- **Kent County Brook Trout Study.** We completed year three of this \$284,000 four-year project, by making significant habitat improvements in Blakeslee, Rum, Cedar and Shaw Creeks, tributaries of the Rogue and in Tyler Creek and the Pratt Lake Drain which feed the Coldwater River. Total 2016 investment: \$82,800.
- **Buck Creek Monitoring.** During Fiscal 2016 we continued the MIDEQ sponsored project to determine the health of this unique, urban cold water trout fishery. Total 2016 investment: \$9,600.
- **Rogue River Home Rivers Initiative.** We continue to provide monetary and volunteer support for this TU National program which included the removal of a Rum Creek dam near downtown Rockford, Michigan during the summer of 2016

Education/Outreach

- **Schrems Scholarship.** We raised an additional \$1,525 thus increasing our Michigan State University endowment fund to \$70,000.
- **Salmon in the Classroom.** We funded two new programs bringing the total to 17.
- **Project Healing Waters.** Partnering with the Kalamazoo Valley Chapter, Schrems team members participated in this semiannual event taking veterans from the Battle Creek VA hospital fishing on the Muskegon River.
- **Reel Recovery.** 2016 marked the fourth consecutive year your team participated in this caregiving organization's annual fly-fishing retreat serving men living/recovering from all forms of cancer.

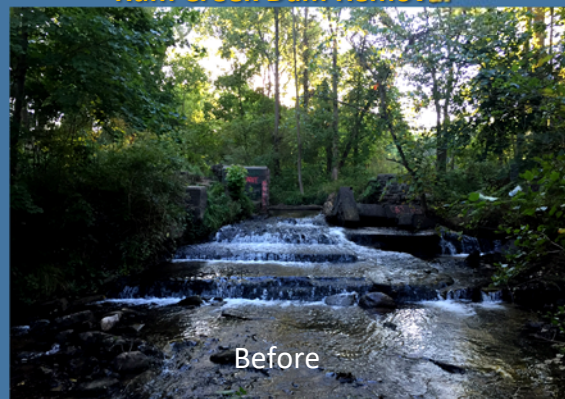
Membership/Volunteer Hours

- We closed fiscal 2016 with 1,080 members.
- Your team invested over 3,400 hours in 2016, to protect and restore Michigan's cold water rivers and streams.

Fundraising

- We thank our members for making our 2016 banquet one of the most successful in the Chapter's history — we netted more than \$23,100 compared to the \$17,200 raised in 2015.
- We secured an unrestricted \$5,000 grant from the Charlevoix County Community Foundation.

Rum Creek Dam Removal



Before

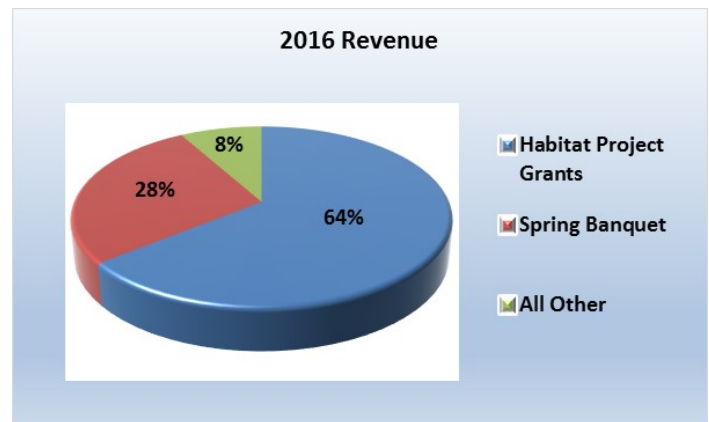
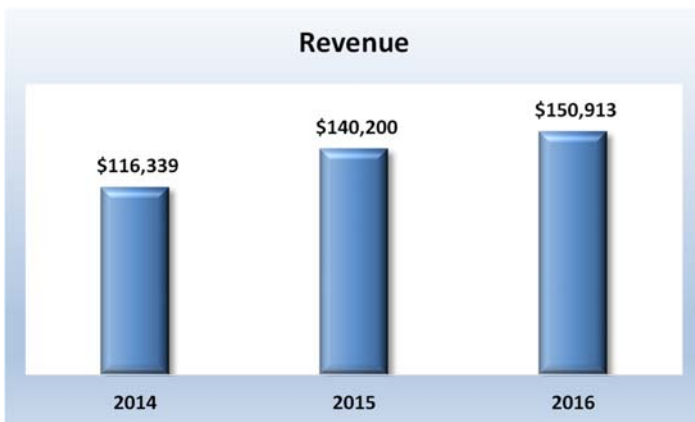


After

Cover Photo: Brook trout caught (and released) from habitat installed in a local stream during our Kent County Brook Trout Project

Our Chapter

- Our Mission is to conserve, protect and restore West Michigan’s cold-water resources, ensuring healthy fish populations for future generations.
- Schrems West Michigan Trout Unlimited, Inc. was incorporated in March, 1962 as TU’s 21st Chapter.
- We closed fiscal 2016 with 1,080 members, up 247 from Fiscal 2015.
- Volunteer hours exceeded 3,400 in 2016, an increase of approximately 200 hours over the fiscal 2015 .



Revenue

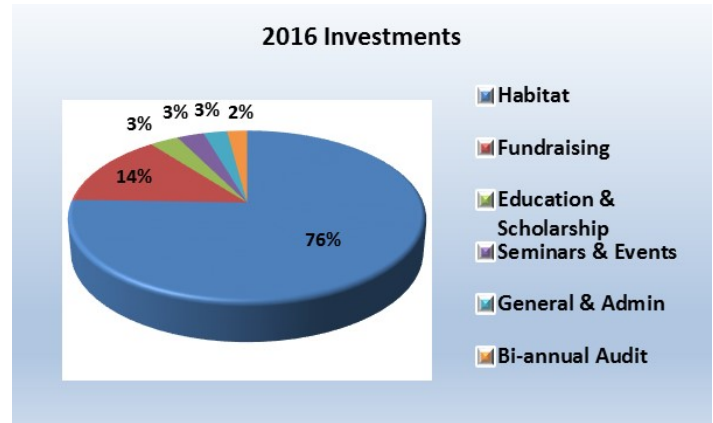
During fiscal 2016, we generated revenue of \$150,900; an 8 percent increase from last year. Our revenue was generated as follows:

- **Habitat Project Grants** — We received 64 percent of our revenue from Federal, State and local municipality grants including the National Fish and Wildlife Federation, Michigan Department of Environmental Quality and the City of Rockford. These funds were used to execute the Kent Brook Trout Study and the Buck Creek Monitoring program.
- **Banquet Revenue** — We generated revenue of nearly \$42,000 (28 percent of total revenue) from our annual banquet, making this event one of the most successful in Chapter history.
- **All Other Revenue** — The balance of our funding, \$12,300 (8 percent), came in part from a generous unrestricted grant from the Charlevoix County Community Foundation, membership event registrations including the Cast N’ Blast which we co-sponsor with the Ruffed Grouse Society, the annual Wa Wa Sum weekend and the December Christmas Party. We also received a substantive donation from the new Orvis Grand Rapids store based on the success of the store’s Grand Opening event. In addition, we received several unsolicited donations from our members to support general operations and the Schrems Scholarship fund.

We thank our membership, the agencies, and the foundations for their generous support of your Chapter’s work.

Our Investments (Expenditures)

During 2016, we invested \$137,303 which is summarized by category on the graph to the right. Your chapter is a very efficient all volunteer organization with only three percent of our annual budget going to support general and administrative costs. Additionally, we incurred the cost of our Chapter's required bi-annual financial audit which accounted for two percent of our overall 2016 expenditures. We are pleased to report



that the accounting firm of Walker, Fluke & Sheldon issued a favorable opinion for the Chapter's 2016 financial results. The audit documents are included at the back of this report.

The balance of our 2016 expenses (95 percent) were used to fund conservation/habitat projects, support fundraising activities, execute membership events and pursue education initiatives. Let's review what we accomplished during 2016 beginning with our habitat/conservation initiatives.

Habitat/Conservation Programs

- Kent County Brook Trout Study.** This program is the largest cold water protection, reconnection and restoration program in your Chapter's history. With a total budget of \$284,000, this four-year program was initiated in fiscal 2014, and when completed will have resulted in significant in-stream and riparian habitat improvements within the Rogue and Coldwater River watersheds including the removal of the hazardous remnants of a dam off Childsdale Road on the Rogue River. The table below summarizes the streams where we have made improvements during the past three years. Our goal is to complete the Kent County Brook Trout study in fiscal 2017. Note the Brook Trout shown below was caught (and released) from habitat installed during this project thus proving the old adage, **"if you build, it they will come"**.

Kent County Brook Trout Study			
Funding Source	2014	2015	2016
Grand Rapids Community Foundation \$100,000	Remove Childsdale Dam Shaw Creek \$48,077	Blakeslee Creek Shaw Creek \$52,245	
National Fish and Wildlife Federation \$149,000		Tyler Creek Pratt Lake Drain \$9,502	Blakeslee, Rum, Stegman Pratt Lake Drain \$71,849
Plainfield Township \$15,000		Cedar Creek \$15,000	
City of Rockford \$10,000			Cedar Blakeslee \$10,000
Schrems Trout Unlimited \$10,000		Cedar Creek \$3,081	Cedar Creek \$919
Total \$284,000	Total \$48,077	Total \$79,828	Total \$82,768

- **Buck Creek Monitoring.** Your team is focused on breathing new life into Buck Creek, an often abused urban trout stream running through suburban Grand Rapids, Michigan. This two-year \$24,450 project is funded by a grant from the Michigan Department of Environmental Quality and is centered on monitoring temperature fluctuations along the 20 mile course of this cold water tributary of the Grand River. The baseline data gathered will be used to develop a habitat restoration plan for this potential urban gem.



Successful Buck Creek Cleanup



Buck Creek Grandville, MI

- With the support of MITU’s Fisheries Biologist Kristin Thomas, the Schrems team shocked two popular angling stretches of Buck Creek. We received good news at the Grandville, Michigan location which yielded a healthy population of about 1,550 trout per mile, including a relatively high level of holdover adult fish in the 12 inch or better range, and a good number of juvenile trout less than 4 inches in length, indicating the presence of natural reproduction. However, the section of river which runs through Wyoming’s Lemery Park was virtually absent of trout, indicating that there is work to do to restore this historic urban trout fishery. The Schrems team also successfully executed its annual river cleanup which was sponsored in concert with several Grandville-based businesses.
- **Rogue River Home Rivers Initiative.** During fiscal 2016, we made our fifth annual \$5,000 donation to the Rogue River Home Rivers initiative. We fully support and work closely with Program Manager Nichol DeMol and her HRI team.

For fiscal 2016, the HRI team engaged in many projects ranging from the development of a storm water management guidebook to installing rain gardens and rain barrels to better manage storm water run-off throughout the watershed. There were also several in-stream projects executed, including the removal of a remnant dam in Rum Creek upstream of Downtown Rockford, which opened up seven stream miles and improved fish passage (before and after pictures of the dam site are featured on the Highlights page of this report).

Home Rivers Initiative Facts to Date

- \$2.1 million invested/leveraged to support conservation efforts
- 7 municipalities adopting new river management policies
- 7.5 miles of reconnected stream enabling fish passage
- 30,000 feet of new “Green” infrastructure
- 3,800 evolved adult and youth volunteers

- **Coldwater and Tyler Creek.** During July, we completed our sixth annual Coldwater River fish population survey along the Dolan Nature Area. This was done in part to measure the effectiveness of the in-stream improvements the Schrems team made several years ago, but also to evaluate the impact of the river bank damage and destabilization caused by excessive brush/tree removal upstream of Freeport, Michigan, an action authorized by the Tri-



County Drain Commission. It is worth noting that the results of this year's fish survey indicated that the trout population declined significantly from its peak level of 2,000 trout per mile we observed in 2013, indicating that the streamside damage done reversed the positive fish population increases realized from the significant in-stream restoration work the Schrems team completed in 2010.

- The Schrems team along with the Coldwater River Watershed Council, Michigan Trout Unlimited and several State and Federal agencies are collectively monitoring this situation to ensure a proper resolution of this matter (i.e. bank restoration, etc.).
- Finally, after 30 years of stewardship, Schrems transferred ownership of the 130 acre Dolan Nature Area to the Michigan Nature Association. This transference ensures the property will get the attention it deserves while remaining a pristine, public wildlife sanctuary to be enjoyed for years to come.
- **Other Activities.** During 2016, your team was also actively involved in two other issues affecting our cold water resources, including aquaculture and chumming.
 - **Aquaculture.** In January your team sponsored a seminar in Grand Rapids where interested stakeholders discussed potential environmental impacts on the Au Sable River related to the planned expansion of the Grayling fish hatchery. At the time of this report, this issue is still being litigated. Trout Unlimited does not support this expansion which, if allowed, would result in the annual fish production expanding from 20,000 pounds to over 300,000 pounds per annum. We will report on the outcome when the results become available.
 - **Chumming.** Your Schrems team supported the efforts of Michigan Trout Unlimited, and many influential fishing guides and other concerned stakeholders to ban the act of chumming to attract fish on Michigan's rivers and streams. We are pleased to report that Chumming was banned from Michigan waters during the August 2016 meeting of Michigan's National Resource Committee.

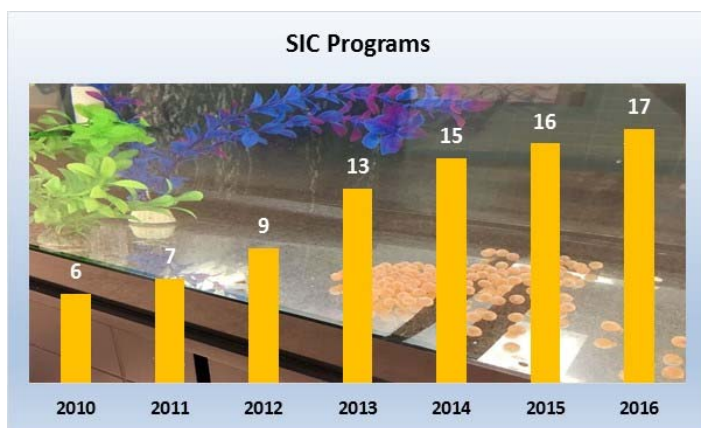


Education

- **Schrems Scholarship.** During fiscal 2016 and late 2015, we raised an additional \$1,575 for our scholarship program at Michigan State University bringing the total endowment balance to \$70,000. This program, which was launched in 1987, provides annual financial support to a Michigan State University Department of Fisheries and Wildlife graduate student pursuing a degree consistent with SWMTU's mission and values. Since its inception, 30 MSU graduate students, including Michigan Trout Unlimited's Executive Director, Dr. Bryan Burroughs, have been awarded this scholarship.

Based on the size of the endowment, we are currently awarding annual scholarships of approximately \$3,400. While helpful at this level, it only covers a small portion of the rising cost of higher education. Therefore, we will soon be reaching out to our membership and the community at large seeking additional donations for the endowment so that the annual scholarship award can be increased. If you wish to make a difference, please consider making a donation to our Scholarship fund by either sending a check to SWMTU or by activating the donate button on our website www.swmtu.org.

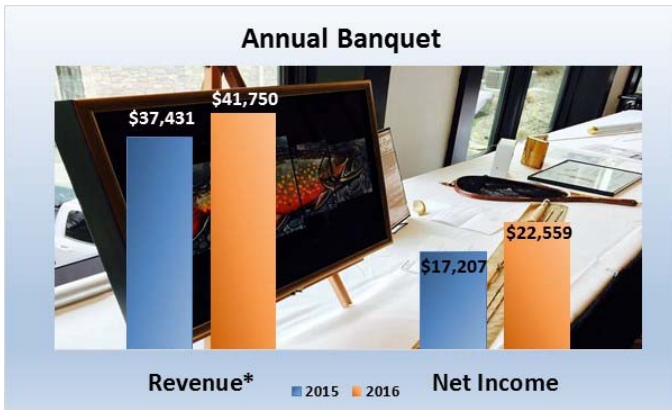
- **Salmon in the Classroom.** SWMTU also sponsors several youth education programs including Michigan DNR's Salmon in the Classroom program where middle/high school students hatch eggs, care for and raise salmon in their classroom. Schrems pays for the initial classroom setup including fish tanks, chillers, etc. at a cost of about \$1,200 per installation. We added two schools, but lost one school in 2016 and closed the year with 17 active programs.



Outreach

- **Project Healing Waters™.** During salmon and steelhead seasons, Schrems partners with the Kalamazoo Valley TU Chapter to take veterans from the Battle Creek VA hospital fishing on the Muskegon River. Fiscal 2016 marked our fifth year of participation in this energizing event.
- **Reel Recovery™.** Members of the Schrems team also participates annually in a Reel Recovery Retreat, a national program which employs the healing powers of fly-fishing, to help men during their cancer recovery process. Fiscal 2016 was our fourth consecutive year of participation in this very moving event.
- **Other Initiatives.** We are engaging the next generation of river stewards by continuing to sponsor the Northview High School Fly Squad as well as student participation in the East Grand Rapids Fly Fishing school. We also participated in the CA Frost Environmental School's on the river day where the Schrems team introduced 70 fifth graders to the art of fly fishing.





Membership Events

Spring Banquet. We held our annual banquet at Watermark Country Club on April 19, 2016. On all counts our 2016 Banquet was one of the most successful events in our Chapter's history with a 12 percent revenue gain generating a 31 percent net income increase. These solid results are a true testament to the enthusiasm and support of our members. We thank everyone who participated and ensure all that these funds will be invested in our Chapter's education, outreach and conservation programs.

Cast 'N Blast. During July, Schrems West Michigan TU and the Grand Rapids Chapter of Ruffed Grouse Society teamed up for a fifth annual joint sporting clays shoot and casting competition. This year's event, which was held at the Kent County Conservation League, netted over \$1,300 for each organization which will be invested in youth programs such as Salmon in the Classroom.



Michigan Fly Fishing History & Fly Tying Event. Last March we teamed up with noted fly fishing historian and owner of the Great Lake Fly Fishing Company, Glen Blackwood, and Chris Soule of the Grand Rapids Fly Tyers to stage this fun and informative event. Held at Rockford Brewing, this event helped our members to place the winter doldrums in the rear view mirror and begin to look ahead toward the dawn of a new trout season.

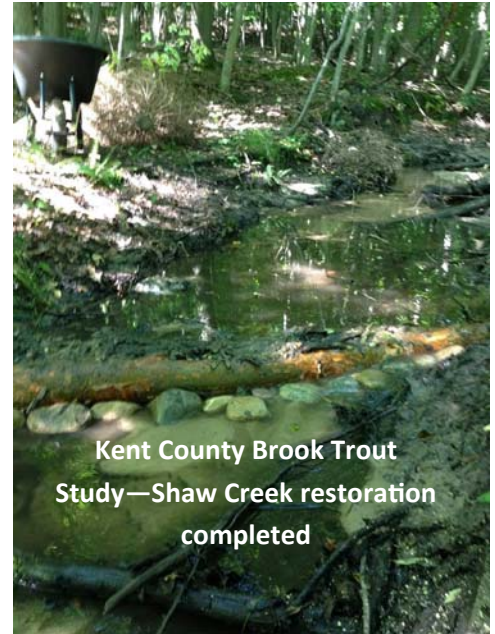
Annual Christmas Party. Each December we hold a Christmas party for our members and their families. For the past several years, this party has been held at Pietro's restaurant where pizza, libation and Santa Claus combine to make this event a success time and again.

Looking Ahead.

Schrems West Michigan Trout Unlimited is committed to making a difference, and while we are making progress, there is still a lot to do. Key initiatives for Fiscal 2017 are shown below.

Habitat and Conservation

- **Kent County Brook Trout Study.** This four-year \$284,000 project will be completed in 2017.
- **Buck Creek Monitoring.** With the instream monitoring phase complete, our team will be analyzing the data with a goal of developing an overall restoration plan for this historic urban trout stream.
- **Rum Creek Restoration.** We continue to reach out to Wolverine Worldwide and the City of Rockford to assist with the improvement of the section of Rum Creek which runs through the former Tannery site.
- **Rogue River Home Rivers Initiative.** We will be supporting Trout Unlimited National's Rogue River Home Rivers initiative through an annual monetary donation of \$6,500 (up from \$5,000 in prior years) and through volunteering for specific in-stream and other conservation related projects.
- **Coldwater River Restoration.** We will be working with Michigan Trout Unlimited, county, state and federal agencies to develop plans to remedy the damages done to the Coldwater River created by excessive tree removal and habitat destruction.
- **Muskegon River.** With support from Dr. Mark Luttenton, Associate Dean of Grand Valley State Universities Graduate School, we will be developing a plan to create baseline data by mapping the sources of cold water data which feed this unique tail-water fishery. We believe that the mighty MO has the potential to become a world class cold water resource.
- **Strategic Direction.** With the Kent County Brook Trout Study and the Buck Creek monitoring program nearing completion, we will be reviewing the Kent County Cold Water Inventory developed in 2010/2011 to identify the next set of major conservation initiatives.



Education/Outreach/Membership

- **Schrems Scholarship.** We will be developing an initiative to raise additional funds for our MSU scholarship fund to allow us to award higher scholarship awards.
- **Salmon in the Classroom/Trout Camp.** Our goal is to add two new Salmon in the Classroom programs and sponsoring a girl and boy to attend the Kalamazoo Valley Chapter's Trout Camp.
- **Women on the Water.** During 2017, we will be holding our first weekend fly fishing educational event for women at Gates Au Sable Lodge. To date, we have received outside donations totaling \$3,000 to support this event.
- **Project Healing Waters/Reel Recovery.** We will continue to participate on both of these events.



**The Board of Directors
Schrems West Michigan Trout unlimited
Grand Rapids, Michigan**

We have audited the accompanying financial statements of Schrems West Michigan Trout Unlimited (a Michigan Non-profit Corporation) which comprise the statement of financial position as of September 30, 2016, and the related statement of activities and cash flows for the year then ended, and the related notes to the financial statements.

Management's Responsibility for the Financial Statements

Management is responsible for the preparation and fair presentation of these financial statements in accordance with accounting principles generally accepted in the United States of America; this includes the design, implementation, and maintenance of internal control relevant to the preparation and fair presentation of financial statements that are free from material misstatement, whether due to fraud or error.

Auditor's Responsibility

Our responsibility is to express an opinion on these financial statements based on our audit. We conducted our audit in accordance with auditing standards generally accepted in the United States of America. Those standards require that we plan and perform the audit to obtain reasonable assurance about whether the financial statements are free from material misstatement.

An audit involves performing procedures to obtain audit evidence about the amounts and disclosures in the financial statements. The procedures selected depend on the auditor's judgment, including the assessment of the risks of material misstatement of the financial statements, whether due to fraud or error. In making those risk assessments, the auditor considers internal control relevant to the entity's preparation and fair presentation of the financial statements in order to design audit procedures that are appropriate in the circumstances, but not for the purpose of expressing an opinion on the effectiveness of the entity's internal control. Accordingly, we express no such opinion. An audit also includes evaluating the appropriateness of accounting policies used and the reasonableness of significant accounting estimates made by management, as well as evaluating the overall presentation of the financial statements.

We believe that the audit evidence we have obtained is sufficient and appropriate to provide a basis for our audit opinion.

Opinion

In our opinion, the financial statements referred to above present fairly, in all material respects, the financial position of Schrems West Michigan Trout Unlimited as of September 30, 2016, and the changes in its net assets and its cash flows for the year then ended in accordance with accounting principles generally accepted in the United States of America.

Hastings, MI

November 30, 2016

Statement of Financial Position

September 30, 2016

	Total	Unrestricted	Temporarily Restricted
Current Assets			
Cash & Equivalents	\$ 60,899	\$ 50,324	\$ 10,575
Accounts Receivable	46,465	46,465	
Grants Receivable	74,743	74,743	
Prepaid Expenses	2,601	2,601	
Total Current Assets	\$ 184,708	\$ 174,133	\$ 10,575
Total Assets	184,708	174,133	10,575
Current Liabilities			
Accounts Payable	60,613	60,613	
Deferred Revenue	77,743	77,743	
Total Current Liabilities	\$ 138,356	\$ 138,356	\$ -
Net Assets			
Unrestricted	35,777		
Temporary Restricted	10,575		
Permanently Restricted			
Total Net Assets	\$ 46,352	\$ 35,777	\$ 10,575

Statement of Activities

For the Year Ended September 30, 2016

	Unrestricted	Temporary Restricted	Permanently Restricted	Total
Revenue, gains and other support				
Contributions and Grants	\$ 7,039	\$ 98,944		\$ 105,983
Program Revenue	3,280			3,280
Fundraising	41,650			41,650
Net Assets Released from Restrictions:				-
Satisfactions of purpose restrictions	97,837	(97,837)		-
Total revenue, gains and other support	\$ 149,806	\$ 1,107	\$ -	\$ 150,913
Expenses and Losses				
Program Services				
Habitat Study and restoration	\$ 103,735			\$ 103,735
Education and Scholarship	4,219			4,219
Seminars	627			627
Special Events	3,296			3,296
Supporting Services				
General & Admin	6,336			6,336
Fund raising	19,090			19,090
Total Expenses & Losses	\$ 137,303	\$ -	\$ -	\$ 137,303
Changes in Net Assets	\$ 12,503	\$ 1,107	\$ -	\$ 13,610
Net Assets at the beginning of the year	23,274	9,468		32,742
Net Assets at the End of the year	\$ 35,777	\$ 10,575	\$ -	\$ 46,352

Statement of Functional Expense

For the Year Ended September 30, 2016

	Program Services	G & A	Fundraising	Total
Bank Charges	\$ 91	\$ 5	\$ 785	\$ 880
Banquet Expense			17,736	17,736
Dues & Subscriptions		718		718
Education Expenses	4,219			4,219
Habitat Project Expense	103,735			103,735
Legal & Professional Expense		3,071		3,071
Insurance		155		155
Officers Expenses		236		236
Other Mailings		180	519	699
Rent or Lease		537		537
Seminar Expenses	614			614
Special Events	3,218			3,218
Supplies		527		527
Taxes and Licenses		20	50	70
Stationary & Printing		888		888
Total Exp & Losses	\$ 111,877	\$ 6,336	\$ 19,090	\$ 137,303

Statement of Cash Flows

For the Year Ended September 30, 2016

Operating Activities

Net Income	\$ 13,610
Adjustments to Reconcile Net Income to Net Cash provided by operations:	
Accounts Receivable	(29,368)
Grants Pending Funding	86,518
Prepaid Expenses	(2,601)
Accounts Payable	34,845
Deferred Revenue	(93,518)
Funded Grants	
Total Adjustments to reconcile Net Income to Cash Provided by Operations	<u>\$ (4,123)</u>
Net Cash Provided by Operating Activities	<u>\$ 9,487</u>
Net Change In Cash for the Period	<u>\$ 9,487</u>
Cash At the Beginning of the Period	<u>51,413</u>
Cash at the End of the Period	<u><u>\$ 60,899</u></u>

Schrems West Michigan Trout Unlimited
Notes to Financial Statements
September 30, 2016

Note A: Summary of Significant Accounting Policies

Background - Schrems West Michigan Trout unlimited began in 1962 to address concerns regarding the health of our local streams and the trout that live in them. The organization's mission is to conserve, protect and restore West Michigan's coldwater fisheries and their watersheds and to provide a forum for the exchange of information concerning coldwater fisheries and the techniques and the sport of trout fishing. Since its founding, the organization has been involved with many activities from river clean-up, stream monitoring, bank erosion and its reconstruction, fish shocking, invertebrate studies and fly fishing clinics, along with many concerns that effect our environment in today's society.

Schrems West Michigan Trout Unlimited currently operates the following programs:

- 1) Habitat study and restoration
- 2) Education and scholarship
- 3) Seminars
- 4) Special events

Schrems West Michigan Trout Unlimited generates revenue primarily from soliciting public and private grants, contributions, and fundraising events.

Basis of Presentation - The accompanying financial statements have been prepared on the accrual basis of accounting in accordance with generally accepted accounting principles. Net assets and revenues, expenses, gains, and losses are classified based on the existence or absence of donor-imposed restrictions. Accordingly, net assets of the organization and changes therein are classified and reported as follows:

Unrestricted net assets - Net assets that are not subject to donor-imposed stipulations.

Temporarily restricted net assets - Net assets subject to donor-imposed stipulations that may or will be met, either by actions of the organization and/or the passage of time. When a restriction expires, temporarily restricted net assets are reclassified to unrestricted net assets and reported in the Statement of Activities as net assets released from restrictions.

Permanently restricted net assets - Net assets subject to donor-imposed stipulations that they be maintained permanently by the organization. Generally, the donors of these assets permit the organization to use all or part of the income earned on any related investments for general or specific purposes. Schrems West Michigan Trout Unlimited does not have any permanently restricted net assets.

Cash and Cash Equivalents - For the statement of financial position and statement of cash flows, Schrems West Michigan Trout Unlimited considers cash and cash equivalents to consist of cash balances in checking accounts and certificates of deposit.

Property, Furniture and Equipment - Schrems West Michigan Trout Unlimited does not own any furniture or equipment and has not recorded any in their financial statements. However, Schrems previously owned property called the Dolan Natural Area, which was purchased in 1992 for \$1 with the stipulation that the land be used principally as a natural area in perpetuity. During the current year Schrems sold the land to the Michigan Nature Association for \$1. The stipulation that the land be used principally as a natural area in perpetuity was included in the transfer of deed.

Schrems West Michigan Trout Unlimited
Notes to Financial Statements
September 30, 2016

Note A: Summary of Significant Accounting Policies (Continued)

Receivables - Receivables are stated at the amount that the organization expects to collect from outstanding balances. Because the organization expects all funds to be collectible, no allowance has been made for uncollectible amounts.

Prepays - Certain payments to vendors reflect costs applicable to future fiscal years and are recorded as prepaid items in the financial statements.

Deferred Revenue - Schrems West Michigan Trout Unlimited receives grants from various organizations and many of these grants are paid on a reimbursement basis or are paid toward identified expenditures. Grants that have been promised or received for which qualifying expenditures have not yet been made are recorded as deferred revenue. Currently, Schrems has deferred revenue of \$67,649 related to the Improving Cold Water Habitat for Brook Trout Program grant, \$7,094 related to the Buck Creek Monitoring Grant, and \$3,000 related to the Women on the Water Program.

Contributions - Contributions received are recorded as unrestricted or temporarily restricted support depending on the existence and/or nature of any donor restrictions. When a donor restriction expires, that is when a stipulated time restriction ends or purpose restriction is accomplished, temporarily restricted net assets are reclassified to unrestricted net assets and reported in the statements of activities as net assets released from restrictions.

Functional Expenses - Expenses have been charged directly to program, fundraising, or general and administrative categories based on specific identification. Indirect expenses have been allocated among the programs and supporting services benefited.

Federal Income Tax - The Organization is recognized as a tax-exempt organization under code Section 501(c)(3) of the Internal Revenue Code. Accordingly, no provision for federal income tax has been made. The Organization is subject to federal income tax only on net unrelated business income under the provisions of Section 501(c)(3) of the Internal Revenue Code. The Organization has evaluated its tax positions and determined it has no uncertain tax positions and has recorded no obligation for unrelated business income tax. No provision for federal taxes is required as of September 30, 2016. The Organization's 2012 through 2015 tax years are open for examination by federal taxing authorities.

Use of Estimates - The preparation of financial statements in conformity with generally accepted accounting principles requires management to make estimates and assumptions that affect certain reported amounts and disclosures. Accordingly, actual results could differ from those estimates.

Advertising Costs - Schrems West Michigan Trout Unlimited expenses advertising costs as incurred. Schrems West Michigan Trout Unlimited expensed \$0 during the year ended September 30, 2016.

Note B: Grants Receivable

Grants receivable represents amounts due from the National Fish and Wildlife Foundation and the Michigan Department of Environmental Quality. Funds due to Schrems are \$67,649 for restoration projects on five coldwater streams in Kent County Michigan and \$7,094 for the monitoring of Buck Creek. Schrems has received confirmation of the awards and the full amount is expected to be collected in the next fiscal year; therefore no allowance for doubtful accounts is required.

Schrems West Michigan Trout Unlimited
Notes to Financial Statements
September 30, 2016

Note C: Net Assets Released from Restrictions

Net assets were released from donor restriction by incurring expenses satisfying the restricted purposes or by occurrence of other events specified by the donor.

Satisfaction of scholarship restrictions accomplished:	
Expenses incurred	\$ -
Satisfaction of habitat project restrictions accomplished:	
Expenses incurred	<u>95,813</u>
 Total	 <u>\$ 95,813</u>

Note D: Concentrations of Credit Risk

The Organization maintains bank accounts at one bank. Accounts at an institution are insured by the Federal Deposit Insurance Corporation (FDIC) up to \$250,000 for balances after October 3, 2008. The amount in excess of the FDIC limits totaled \$0 as of September 30, 2016.

Note E: Fair Values of Financial Instruments

The following methods and assumptions were used by the Organization in estimating its fair value disclosures for financial instruments:

Cash and cash equivalents, accounts receivable, grants receivables, prepaids, accounts payable, and deferred revenue: The carrying amounts reported in the Statement of Financial Position approximate fair value because of the short maturities of those instruments.

The estimated fair values of the Organization's financial instruments are as follows:

	Carrying Amount	Fair Value
Financial assets:		
Cash and cash equivalents	\$ 60,899	\$ 60,899
Accounts Receivable	46,465	46,465
Grants receivable	74,743	74,743
Prepaids	2,601	2,601
Financial liabilities:		
Accounts payable	\$ 60,613	\$ 60,613
Deferred revenue and deposits	77,743	77,743

Schrems West Michigan Trout Unlimited
Notes to Financial Statements
September 30, 2016

Note F: Temporarily Restricted Net Assets

Temporarily restricted net assets consist of the following at September 30, 2016:

	2016
Scholarships	\$ 1,575
Improving Coldwater Habitat for Brook Trout	6,000
Women on the Water	<u>3,000</u>
Total	<u><u>10,575</u></u>

Note G: Evaluation of Subsequent Events

The Organization has evaluated subsequent events through November 30, 2016 the date which the financial statements were available to be issued.

About Schrems

Schrems West Michigan Trout Unlimited was founded in 1962 to address the health of our local streams and the wild trout that live in them. With that point in mind, our chapter is involved in many activities ranging from river clean-ups, in-stream habitat monitoring, bank reconstruction, fish shocking, invertebrate studies and fly fishing clinics. We execute these programs by marshalling volunteers from the community and from our dedicated Trout Unlimited members. Our overall goal is to protect and restore West Michigan's cold water resources so that future generations can enjoy them as much as we do today.

Donate/Contact

The work we do would not be possible without the support of our members. Your donations are used solely to fund activities such as the Schrems Scholarship, Salmon in the Classroom, Trout Camp, Membership seminars and various habitat/conservation programs.

If you would like to donate to the Chapter, you can do so via the PayPal link (Donate SWMTU Button) on our website, www.swmtu.org, or by mailing your donation to Schrems West Michigan Trout Unlimited, P.O. Box 230094, Grand Rapids, MI 49523.

When making a donation, please provide an address so that we may send you a thankyou note and a receipt for your donation. Also, if you would like to designate your contribution to a specific program such as education, scholarship, conservation, etc. please let us know and we will honor your request.

TU Membership

Make a difference and become a Trout Unlimited member by visiting our website <http://www.swmtu.org/general/join-trout-unlimited>.

Board (Bold) & Other Key Team Members

With the exception of June and July, our Chapter holds monthly Board meetings at 6:15pm the first Tuesday

Jeff Edwards, President, 616-514-7121, jedwards27@msn.com

Ellie Frey Zagel, Vice President, 616-331-6827, freyel@gvsu.edu

Larry Risbridger, Secretary, 616-690-0692,
elrisbridger@charter.net

Tom Mundt, Treasurer, 616-485-1426, tommundt@gmail.com

Marci Cisneros, Membership and Communications Chair,
mcisneros@visitgrandhaven.com

Lance Climie, Banquet Chair, 616-307-3971,
lanceclimie@hotmail.com

Pete Miller, Conservation Chair, 417-420-4003,
peterbmiller9@gmail.com

Steve Frendt, Assistant Conservation Chair, 616-540-0742,
sfrendt@dartbank.com

Steven Brinks, snbrinks@sbcglobal.net

Michael Crittenden, michael@mackinawharvest.com

Eric Doyle, 616-634-8494, ericdoyle@me.com

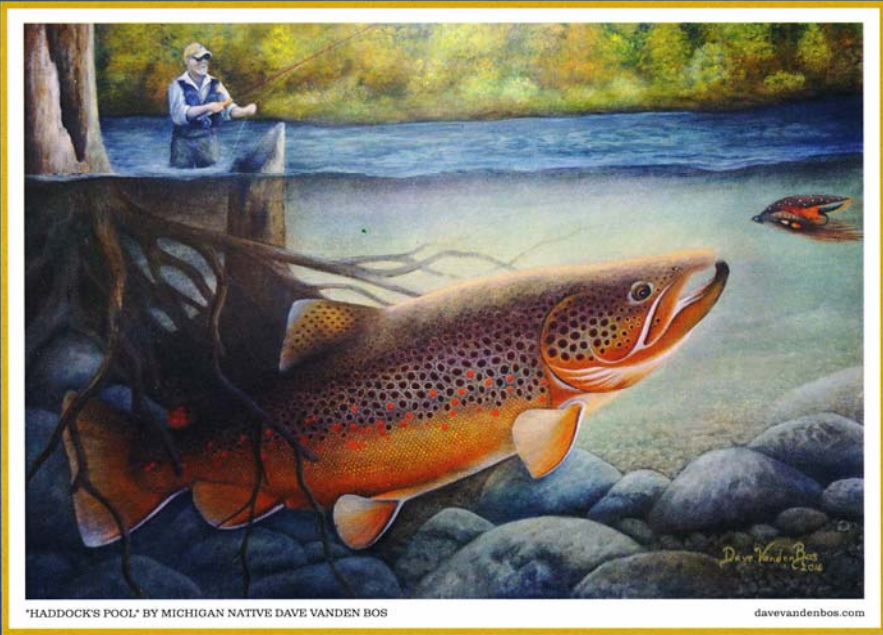
Mark Gurney, 616-635-0937, megurney1234@gmail.com

Dave Helder, 616-914-5312, davehelder78@gmail.com

Al Woody, awoody@comcast.net (MITU representative)

George Zuiderveen, 616-240-4176, ggzuider@sbcglobal.net

Nichol De Mol, Project Manager, Rogue River Home Rivers Initiative, 231-557-6362, ndemol@tu.org



"HADDOCK'S POOL" BY MICHIGAN NATIVE DAVE VANDEN BOS

davevandenbos.com



SCHREMS WEST MICHIGAN CHAPTER
TROUT UNLIMITED
ANNUAL BANQUET • TUESDAY, APRIL 18, 2017
GRAND RAPIDS, MICHIGAN

